

job name:
 type:

mere™ spec sheet 90CRI

driver housing / power head

4" dia. extruded aluminum with silver anodized or black anodized finish, acts as heat sink as well. also available in painted finishes listed below.

diffuser

6" dia. .100" Satinice white, optimum light diffusion, acrylic cylinder.

optics

340° omnidirectional silicone optic.

bottom lens (optional)

P95 frosted acrylic bottom lens solvent welded to bottom of cylindrical diffuser.

LED module

COB array in 2700K, 3000K, 3500K, or 4000K. (call factory for 5000K) 90+ cri standard. under normal operating conditions, the LEDs employed are rated for >50,000hrs L70 (6.8K) per IES TM-21 from LM-80 test data.

driver

integral, programmable, UL class P, class 2, universal input (120-277v), constant current, 0-10v dimming, 1% minimum dimming level, PF >.9, THD <20%, protections include open and short circuit, overload and over temperature.

mounting

5" dia. spun steel canopy in satin white with single or optional dual stainless steel cables and field adjustable grippers that allow for exact AFF mounting heights.

premium mountings

colored cloth cord (optional)

extruded aluminum canopy painted to match fixture. ultrathin vertical stainless steel cable and field adjustable gripper that allow for exact AFF mounting heights. cloth-covered power cord color options listed below. cord requires special stripping tool (link).

power over cable (optional)

extruded aluminum canopy painted to match fixture. Class 2 LED powered suspension system that suspends and powers the fixture with thin stainless steel copper-core conductive cables, providing a clean look without the need for a separate power cord. powered suspension requires cable cutter (link) specifically designed to cut stainless steel aircraft cable from 1/32" to 1/8".

emergency

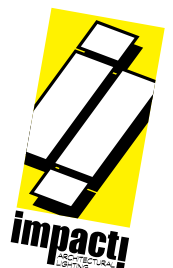
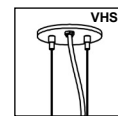
recommend use of inverter (by other). optional WREM: wired for remote EM battery (by other). if using WHPC, SBPC, or BKPC cords, 2nd power cord required.

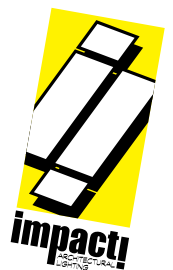
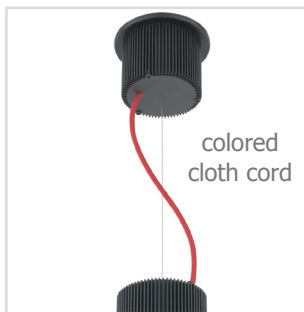
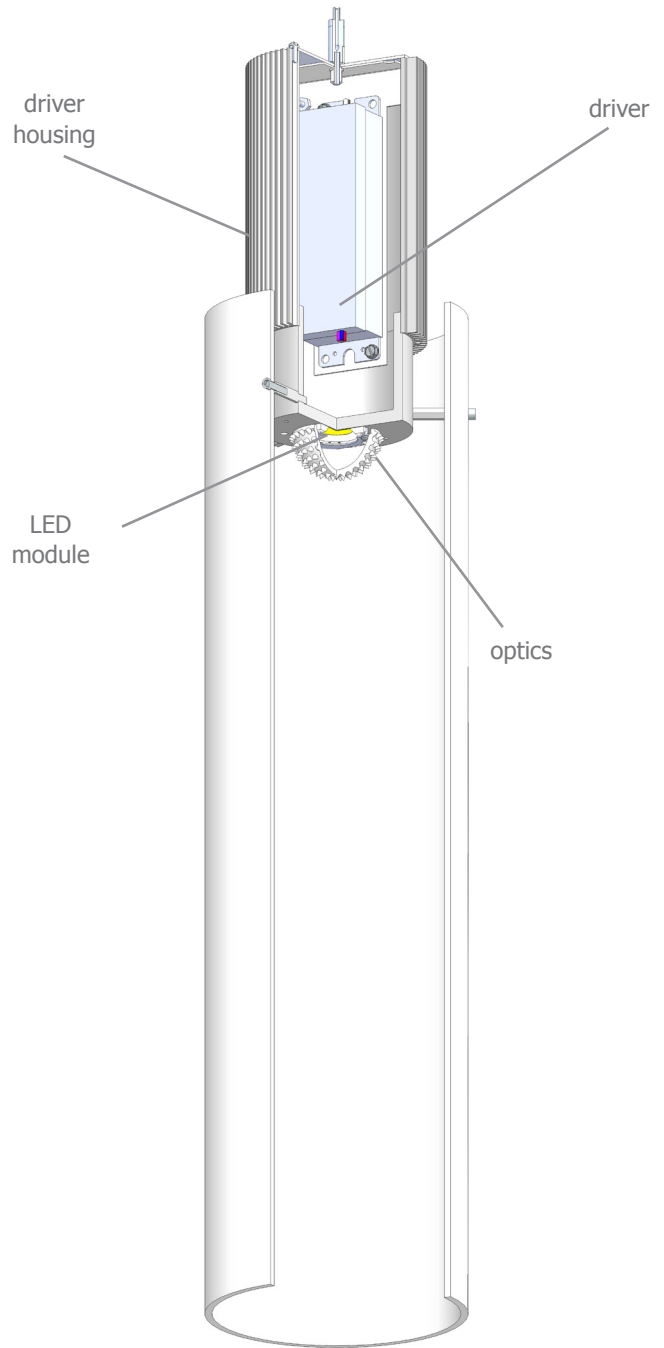
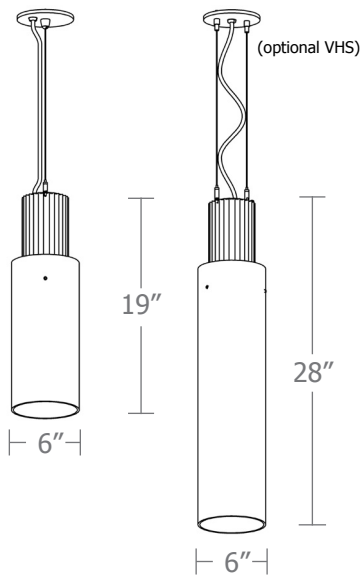


catalog number

--	--	--	--	--	--

size	CCT	lumens	anodized finishes	power cord	options
P2519 6" dia X 19"ht	27 2700K	FX 1535 lm	AN silver anodized	WHPC white power cord and canopy	3FT 36" cable
	30 3000K	LO 2165 lm	ANB anodized black	BKPC black power cord and canopy	6FT 72" cable
P2528 6" dia X 28"ht	35 3500K	HI 2980 lm	painted finish	SBPC silver braid power cord and white canopy	12FT 144" cable* <small>*not available with premium power cords</small>
	40 4000K	HX 3790 lm	BS brass	premium <small>(driver canopy required) (not available w/ 12ft option)</small>	BL frosted acrylic bottom lens, solvent welded.
		CL* xxxx lm <small>* custom lumens consult factory</small>	BU blue	BUPC blue cloth cord	VHS 2-point vertical hanging system
			BZ bronze	ORPC orange cloth cord	WREM wired for remote EM battery pack (by other) (see note above)
			CP champagne	PLPC purple cloth cord	ELD EldoLED**
			GM gun metal	RDPC red cloth cord	LUT Lutron** <small>**consult factory</small>
			MB military blue	WGPC white & gray dot cloth cord	
			MW matte white	POC power over cable	
			OR orange		
			RD red		
			SS satin silver		
			TG textured gray		
			YO yellow		
			premium finish		
			RAL specify RAL#		





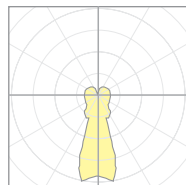
Calculation Table

The application of a Light Loss Factor is required to:

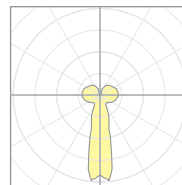
- match the lumen output for the power module specified
- incorporate the increased lumen output due to LED/Driver upgrades

Cat No	Delivered Lumens*	Watts 120V / 277V	IES File #	LLF to be applied
P2519 FX	1535	14	17553	.82
P2519 LO	2165	20	17553	1.15
P2519 HI	2980	29	17553	1.59
P2519 HX	3790	38	17553	2.02
P2528 FX	1535	14	17558	.51
P2528 LO	2165	20	17558	.71
P2528 HI	2980	29	17558	.98
P2528 HX	3790	38	17558	1.25

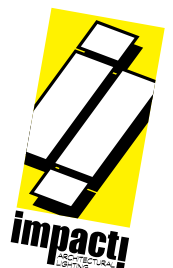
*delivered lumens based on 4000K, 90+ cri
optional bottom lens multiplier .90




17553
P2519-40LO



17558
P2528-40HI

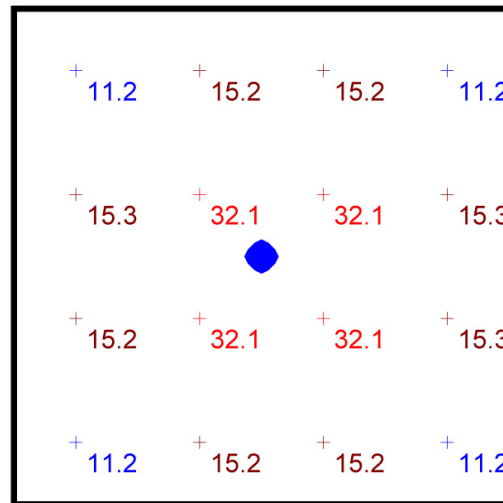


Typical Lighting Layout

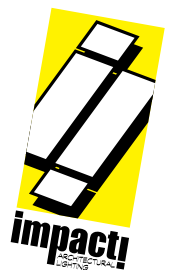
Schedule						
Symbol	QTY	Manufacturer	Catalog Number	Description	Lamp	Wattage
	1	Impact Architectural Lighting	P2519 40 HI	6" dia. x 19"h pendant mere luminaire	4000k 90CRI LED	29

- 8' x 8' x 10'H space
- 80/50/20 reflectances
- bottom of fixture at 8' aff
- FC readings at 2.5' aff
- layout conducted using P2519 with HI lumen 90 CRI package providing 2980 delivered lumens

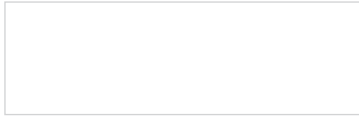
Statistics						
Description	Symbol	Avg	Max	Min	Max/Min	Avg/Min
mere	+	18.4 fc	32.1 fc	11.2 fc	2.9:1	1.6:1



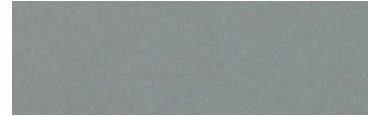
Plan View
Scale - 1" = 2ft



Powder Coat Paint Finishes



MW matte white



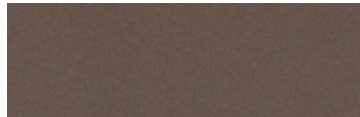
SS satin silver



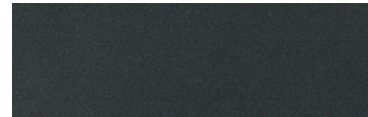
TG textured gray



CP champagne



BZ bronze



GM gun metal



OR orange 2011



BU blue 5017



BS brass



RD red 3020



YO yellow 1018



MB military blue

For accurate color verification, actual finish samples are available upon request.

Premium Finishes*



RAL#

*Available on select series. Consult product submittal for availability.

